



CLEVELAND  
**Hopkins**  
*Connecting our region to the world*

*Residential Sound  
Insulation Program*

# Windows

*Acoustical Window Selections*



# Acoustical Vinyl Composite Double-Hung Window

## Window Construction:

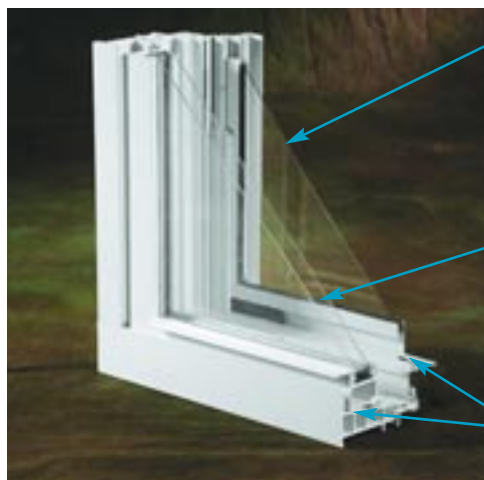
The vinyl composite double-hung window assembly is made of a vinyl prime double-hung window and a double-hung aluminum storm window with screen that is factory-attached to the frame of the prime window. The sash of the storm window is removable to the interior for cleaning and maintenance.



## Double-Hung Window

With tilt-in operation for easy cleaning.

## Window Corner Section



Single Pane Storm Window

Double-Insulated Pane Prime Window

Window Frame

## Acoustical Window Selections

- Double-Hung
- Slider
- Double Slider
- Casement
- Fixed

**Note:** Frosted glass windows are available only where an existing condition exists.

## Section cut of composite acoustical window

**Note:** Grilles, if required, are located between the prime window panes.

# Acoustical Vinyl Composite Sliding Windows

## Window

### Construction:

The vinyl composite sliding window assembly is composed of a vinyl sliding prime window and a factory-attached sliding storm window with screen applied to the exterior of the prime window frame. The sash of the sliding window is removable to the interior for cleaning and maintenance.



### Single Sliding Window

Slider sash is removable for ease of cleaning.

## Window

### Construction:

The vinyl composite double sliding window assembly is composed of a fixed prime window sash in the middle with sliding sashes on both sides. Factory-attached sliding storm windows with screens provide flexible operation and ease of maintenance.



### Double Sliding Window

With vent sash in closed position. Center portion of window is fixed and does not open or slide.



# Acoustical Vinyl Composite Casement Window

## Window

### Construction:

The vinyl composite casement window assembly is composed of one of the following, depending on the manufacturer:

1. A vinyl frame with operable vinyl sash and aluminum storm window factory-attached to the exterior of the sash. Insect screen attaches to the interior of the frame.
2. A vinyl frame with operable vinyl sash and an aluminum storm window installed in a track to the interior of the frame. Insect screen and storm window fit in same interior frame track and are interchangeable.



**Two-Light Casement Window**



**Single Casement Window**



**Three-Light Casement Window**

# Acoustical Vinyl Composite Fixed Window

## Window

### Construction:

The vinyl composite fixed window assembly is made of a vinyl fixed prime window with a storm window that is factory-attached to the prime window frame. The sash of the storm window is removable for cleaning and maintenance.



### Fixed Window

With removable exterior storm.



The program offers three window colors: White, almond, and brown. Color hues vary slightly depending on window manufacturer.

Final window appearance may vary from those represented in this brochure. This publication is for presentation purposes reflecting the general characteristics of the program products.

# Grille Styles

## Note:

The intent of the program is to match your existing grille pattern. However, due to manufacturers' constraints, the configuration of new window grille patterns may differ from what currently exists.



**Diamond**



**Colonial**



**Colonial (Top Sash Shown)**

## Master Plan Expansion Mission Statement



Cleveland Hopkins International Airport is committed to providing optimum air service and increased economic opportunity by creating an airfield designed to handle increased passenger capacity, provide non-stop service to international destinations and establish the region as a more desirable location for industries worldwide. Moreover, the City of Cleveland is also committed to minimizing the noise impact upon surrounding communities and enhancing the environment for our neighbors.

## Warranties

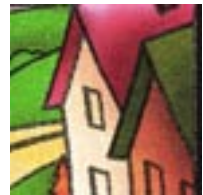
### Product Warranty

The acoustical vinyl window manufacturer shall furnish a written warranty against defects in workmanship and materials, under normal use. Warranty may vary by product and manufacturer.



### Installation Warranty

The general contractor shall furnish a written warranty against defects in workmanship and materials related to installation of window treatments for a period of one (1) year from the date of substantial completion for each home.



### Approved Manufacturers

Acoustical windows supplied to the program come from a variety of manufacturers. All are rigorously tested to insure that they meet the program's acoustical and quality standards.





Department of Port Control  
Cleveland Hopkins International Airport  
5300 Riverside Drive  
Cleveland, Ohio 44135